

Industry:
Wood processing

Plant:
Vortex Breaker

Lining System:
K-ALOX Ceramic lining

K-ALOX LINED VORTEX BREAKER

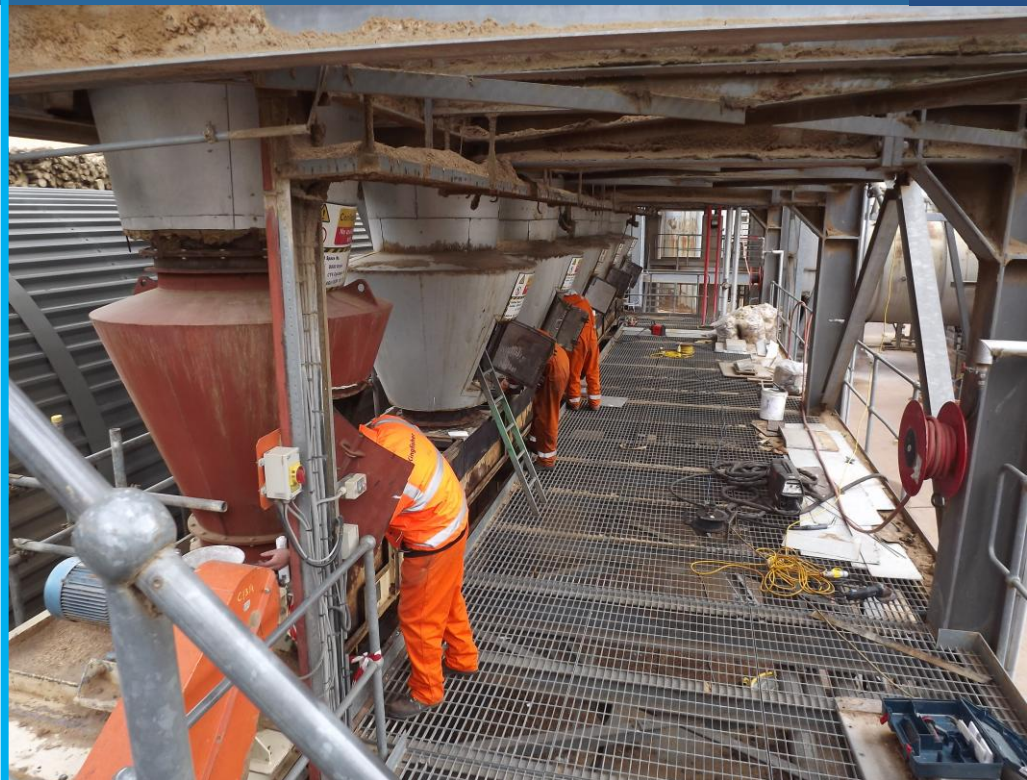
Key Benefits

- ✓ Eliminated the need of replacement
- ✓ Allow greater production rates
- ✓ Reduction in maintenance costs
- ✓ Lining system can be replaced

Problem: The process of material and air separation leads to high wear rates due to the forces associated with exiting velocities, density and volume of product. This results in the vortex breaker section of a cyclone wearing away at a faster rate than the remainder of the cyclone body.

Solution: To counter this problem area we have lined this section of the cyclone using our 6mm thick 92P K-ALOX ceramic lining system. The system was installed in position without having to take out the original steel fabrication and the system was adhered to the structure using our high strength K-FIX VHB high strength polymer adhesive system that caters for constant operating temperatures up to the 150°C.

Benefit: This system will extend the service longevity of the plant by a factor 10 compared to the original stainless steel bodies. This will result in improved operational performance, reduced dependency on maintenance resource to facilitate regular replacement and negates the need to hire expensive cranes and lifting equipment associated with its replacement.



Protecting Industry Worldwide

Cradley Business Park
Overend Road
Cradley Heath
West Midlands
United Kingdom
B64 7DW
T +44 (0)1384 410777
F +44 (0)1384 410877
E enquiries@kingfisher-industrial.com
www.kingfisher-industrial.com

The information contained on this product Information sheet is to be used as guidance only. The advice and technical data given is done so in good faith and does not constitute any warranty or guarantee on product performance or Suitability. We hereby reserve the right to change the technical information herewith without Notification or prior agreement